

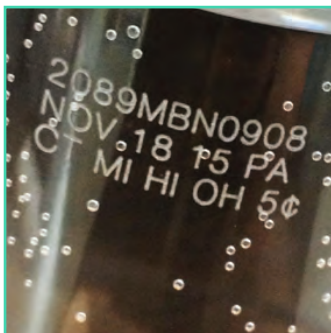
## eSolarMark Light PET CO<sub>2</sub> Laser Coding System

The Matthews eSolarMark Light CO<sub>2</sub> laser coding systems are ideal for coding a high quality, contrasting mark onto PET materials, such as beverage containers. Also ideal for glass substrates, and can be cleanly mark alphanumeric text, date and time codes, serial numbers, barcodes, 2D codes and graphics.

Matthews laser coding systems provide many interface options to connect to remote devices such as PLC's, packaging equipment, and material handling equipment. Our lasers have the greatest focal distance, allowing the laser to be mounted farther away from production lines. There are three control interface models (network, or 10.4" color touch screen) and Matthews provides free message design software with every laser system purchased.

### Features:

- Vector quality, contrasting codes onto PET material and glass substrates
- Permanent coding of text, date and time codes, serial numbers, barcodes and 2D codes, and graphics
- Optional IP65 rated enclosure for washdown environments
- Laser coding requires no ink/solvent consumables for a lower overall cost of ownership
- Clean and eco-friendly coding system



## eSolarMark Light

ESOLARMARK LIGHT CO <sub>2</sub>		9.3 μm WAVELENGTH
Laser Output Power	20W, 50W	
Electrical Requirements	115V 60Hz/230V 50Hz (auto adjustable)	
Power Consumption	20W = 600W/ 50W = 1000W	
Cooling	Integrated Fans: at ambient temperature 41-104°F (5-40°C) Up to 100% of laser duty cycle Water: at ambient temperature 104-113°F (40-45°C) (IP65) Or in dirty, dusty, humid environment	
Operating Environment	Ambient temperature 41-113°F (5-45°C) Humidity up to 80% non-condensing	
Enclosure Type	IP52, NEMA 12 / IP65, NEMA 4 (optional)	
Dimensions and Weight	Control Unit: 13.2" L x 14.2" W x 6.3" H (335 mm L x 436 mm W x 160 mm H) 18 lb. (8 kg) Marking Unit: 28.5" L x 5.5" W x 5.5" H (726 mm L x 140 mm W x 140 mm H) 29 lb. (13 kg)	

### COMMUNICATION

- USB/RS232/Ethernet 10 Base T
- Input/output connector for: system interlocks, remote start/stop, ready, marking, status signals, and remote key switch connection.
- SolMark II job edition software available for Windows XP, Windows 7

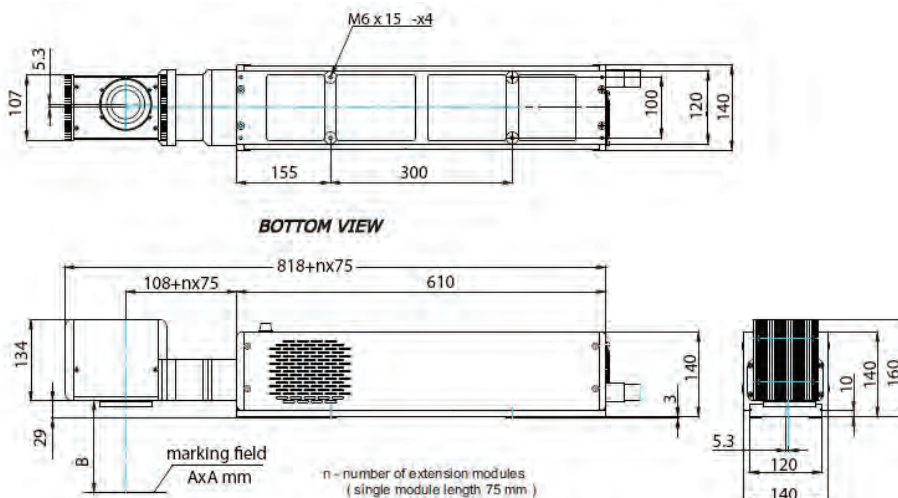
### LANGUAGES

- Different language versions available:  
**English, Chinese, French, German, Spanish, Italian, Dutch, Polish, Swedish, and Portuguese**

### OPTIONS

- Multiple user interface options (network, touchscreen)
- IP65 enclosure
- Scanning head mounting extension modules
- Product detector and shaft encoder
- Fumes/dust extractor (with active carbon & HEPA filter)
- Chiller for water-cooled systems (IP65)
- Red laser pointer for marking position preview

### DIMENSIONS (All dimensions specified in mm's unless otherwise noted)



### CE AND CDRH COMPLIANT

## DANGER

### Invisible Laser Radiation

Avoid Eye or Skin Exposure to Direct or Scattered Radiation



CO<sub>2</sub> Laser

10,600nm, 150W Max Class IV Laser Product



# Matthews Marking Systems™

Americas | Pittsburgh, PA | O: 800-775-7775 | [www.matthewsmarking.com](http://www.matthewsmarking.com)  
Asia | Beijing, China | O: +86.10.8879.6525 | [www.matthewsmarking.cn](http://www.matthewsmarking.cn)  
Europe/Australasia | Mölndal, Sweden | O: +46.31.338.7900 | [www.matthewsmarking.se](http://www.matthewsmarking.se)  
Germany | Aschau, Germany | O: +49.80.5295110 | [www.matthewsmarking.de](http://www.matthewsmarking.de)

